



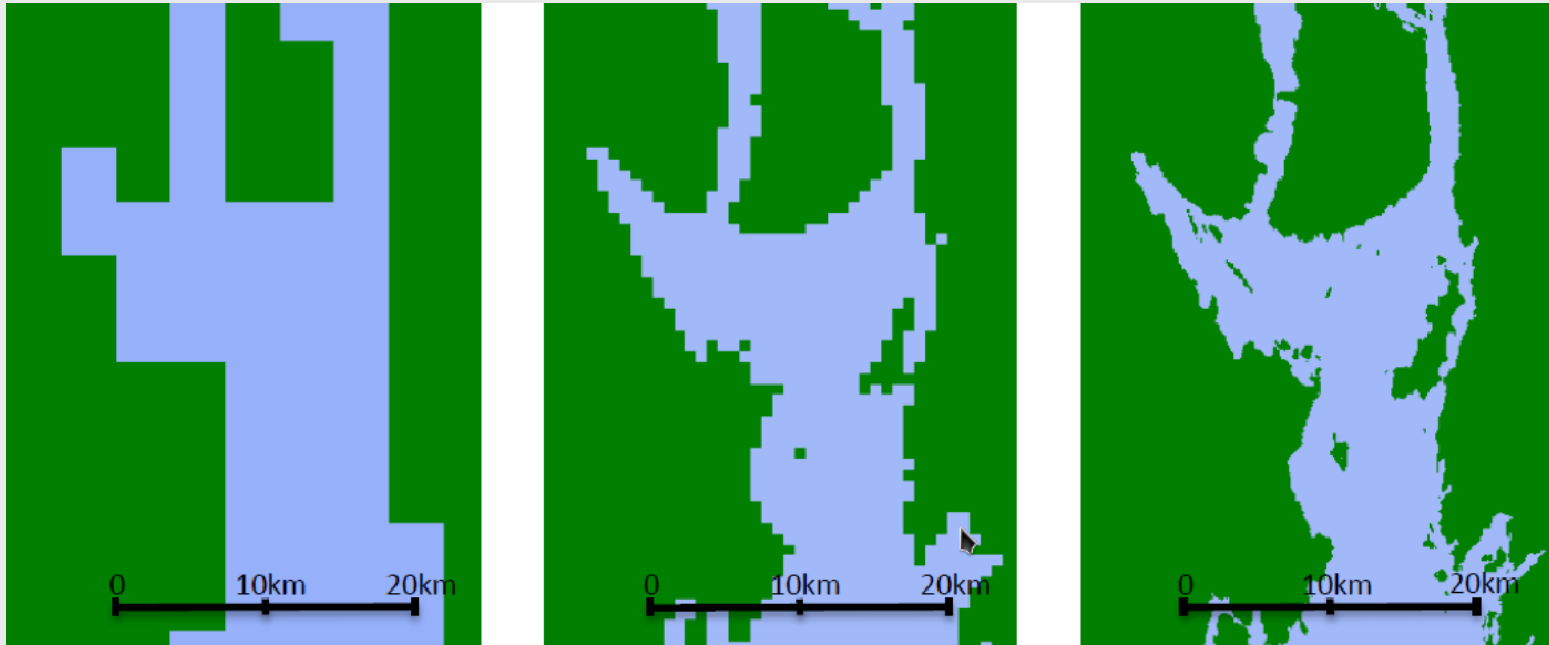
Meteorologisk  
institutt

# Drivbaner og gitteroppløsning

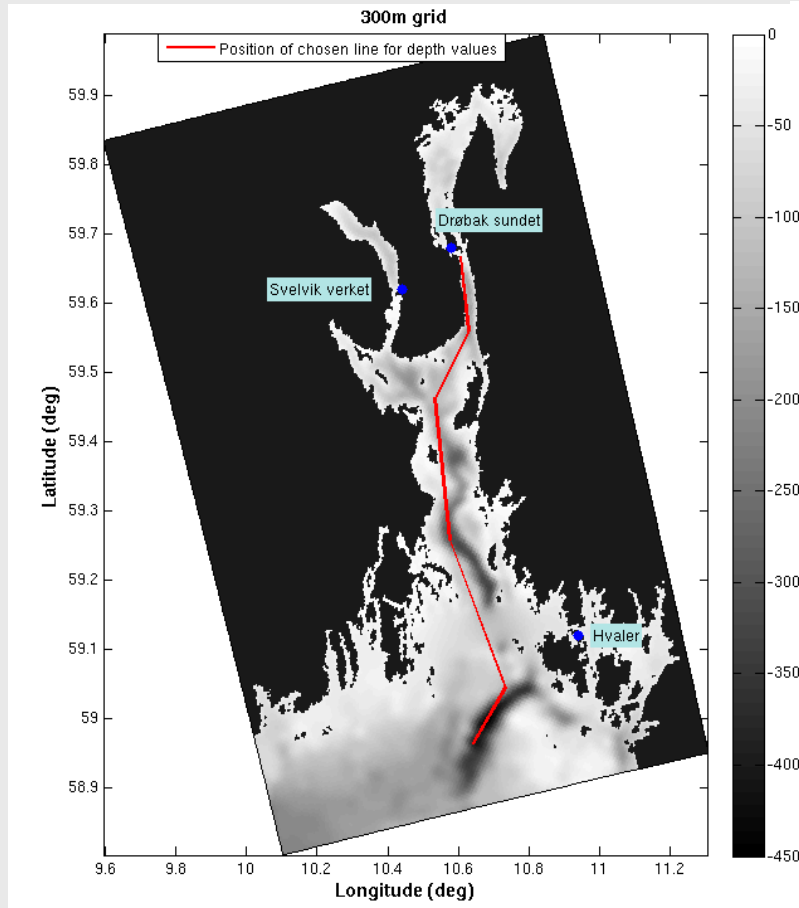
Utplukk fra MSc Peter Isachsen arbeid

2014-03-17

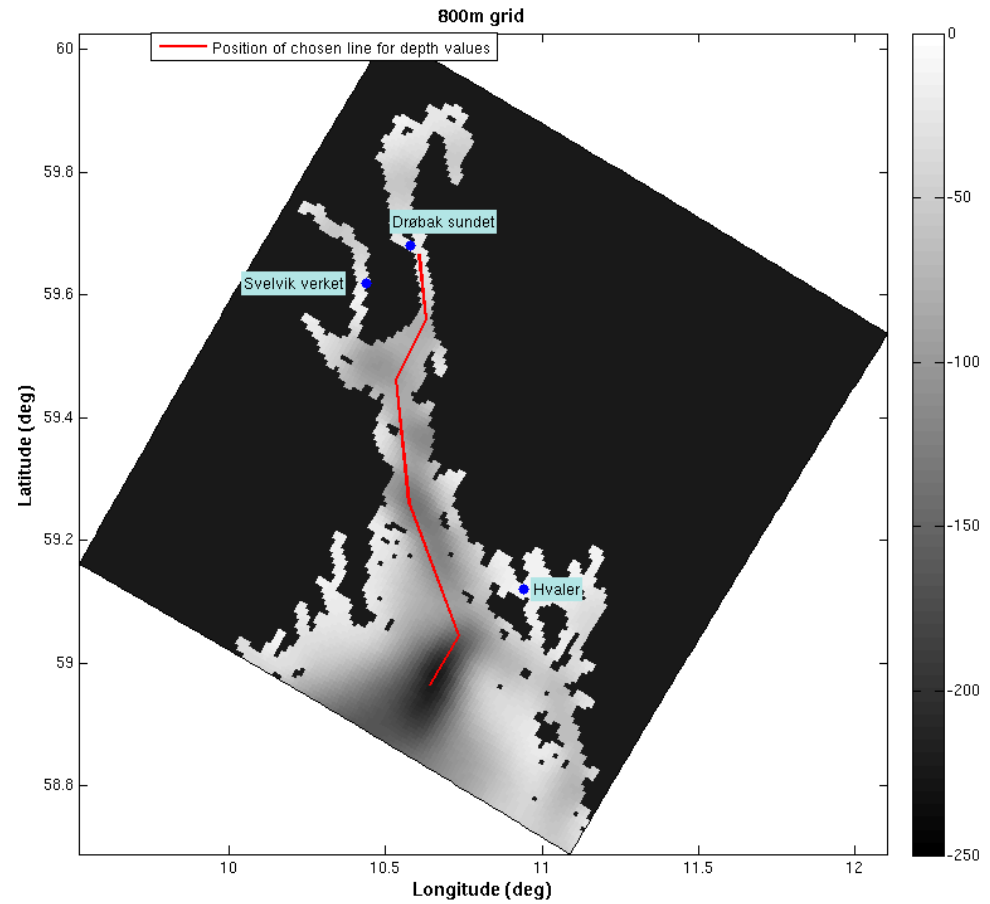
# Drivbaner og gitteroppløsning



# Topografi

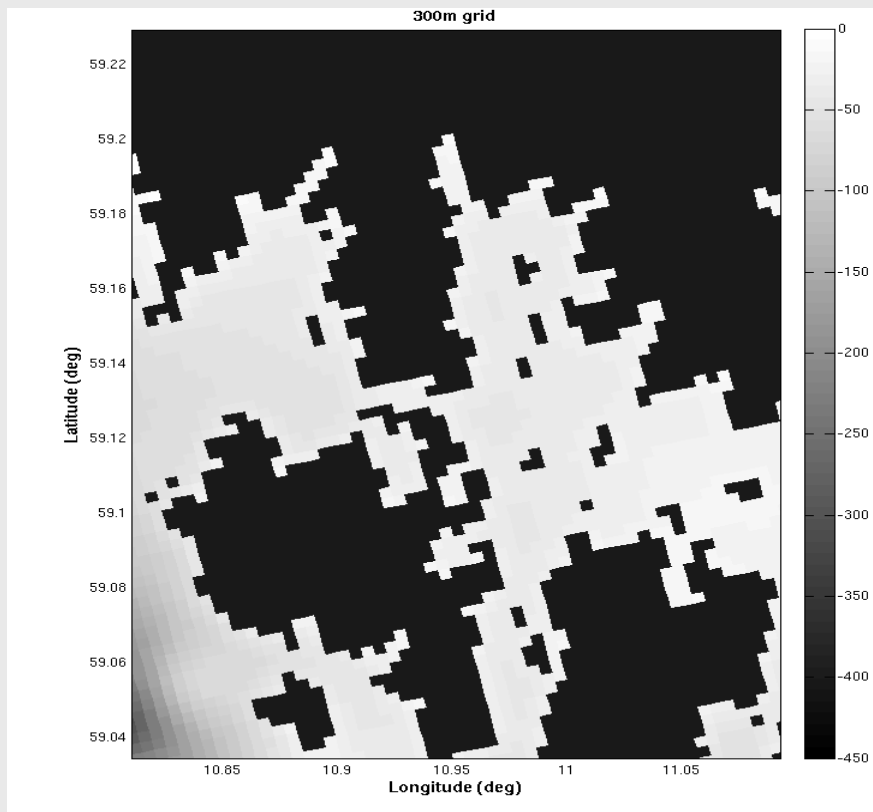


300 m gitter

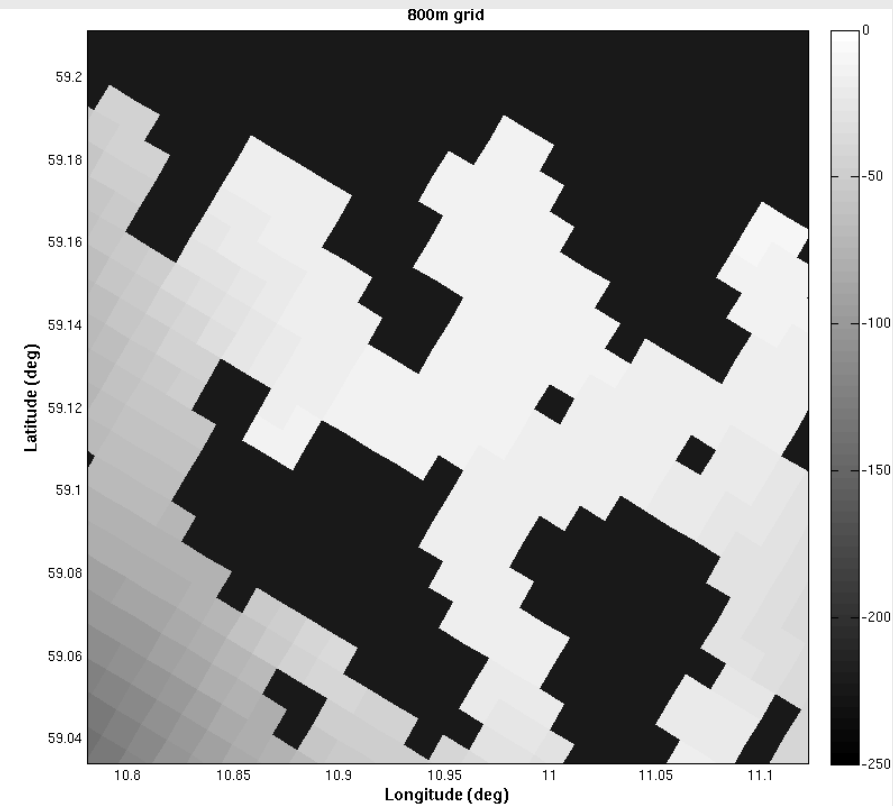


800 m gitter

# Eksempel fra Hvaler

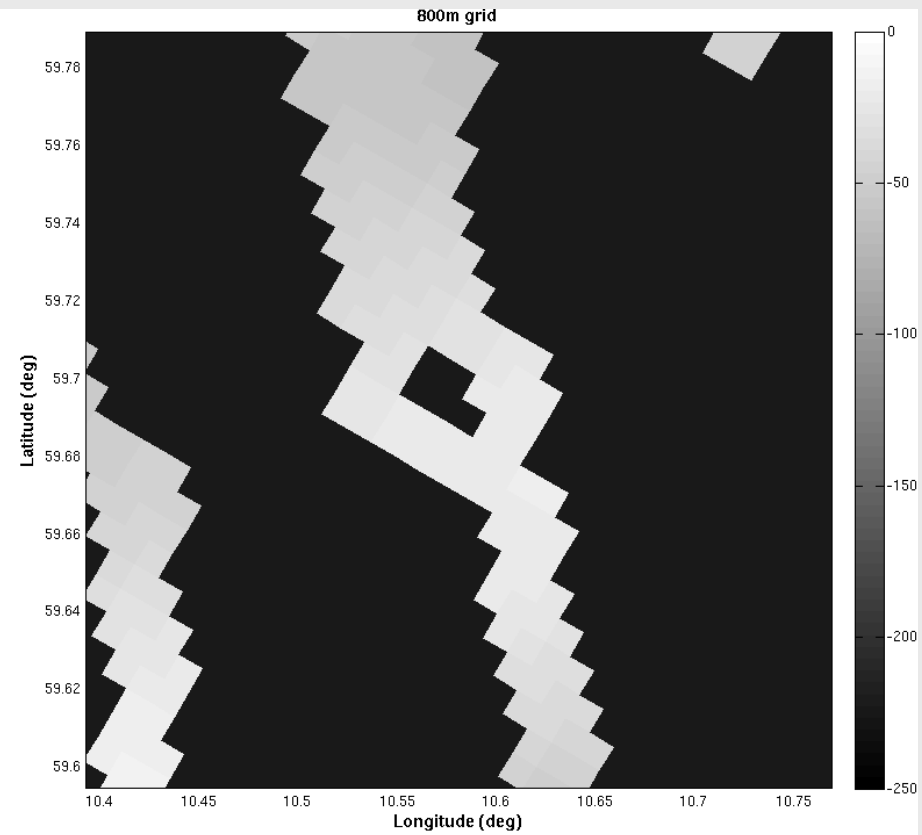
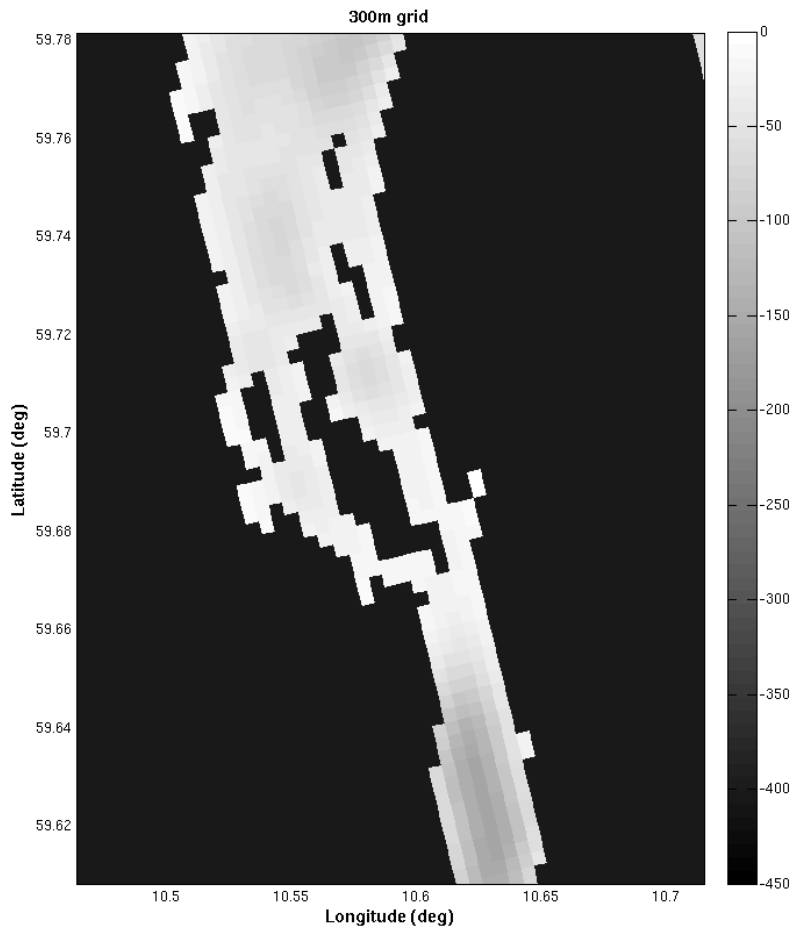


**300 m gitter**



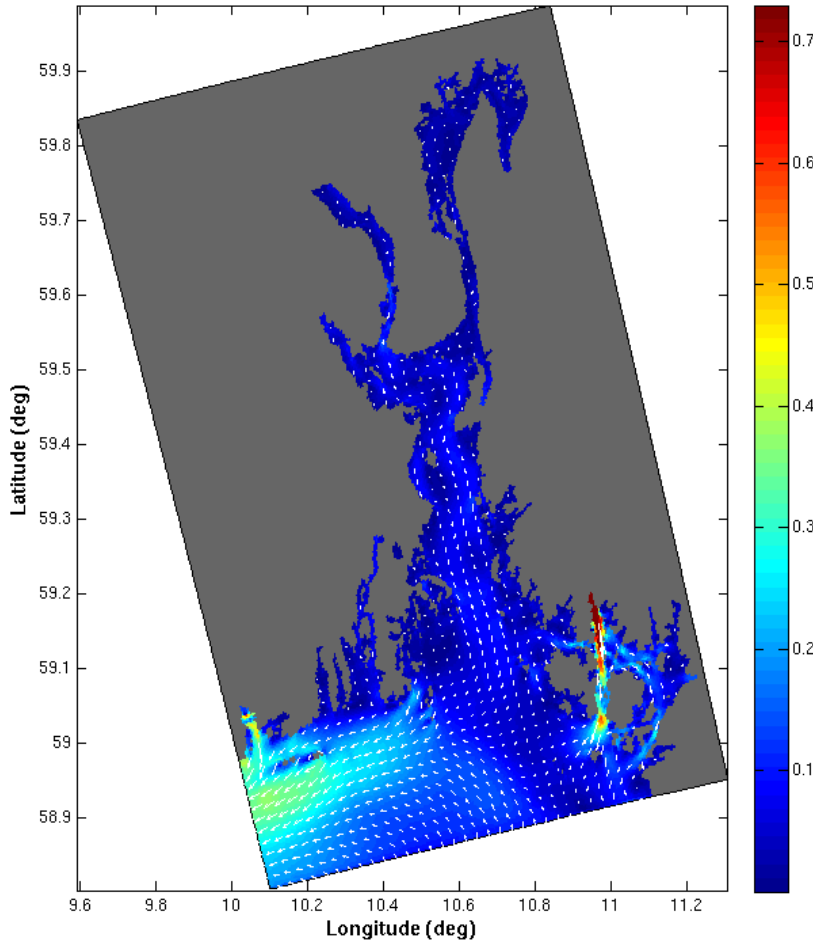
**800 m gitter**

# Drøbak

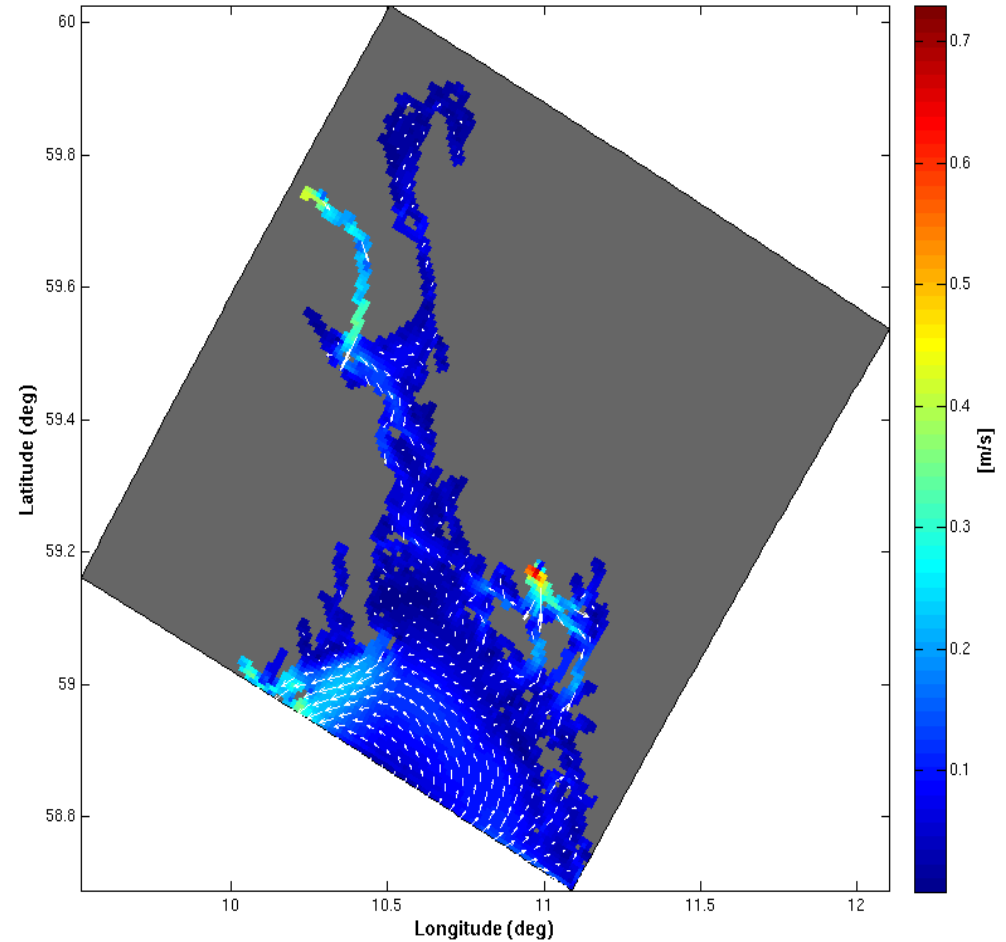


# Strøm i overfalten

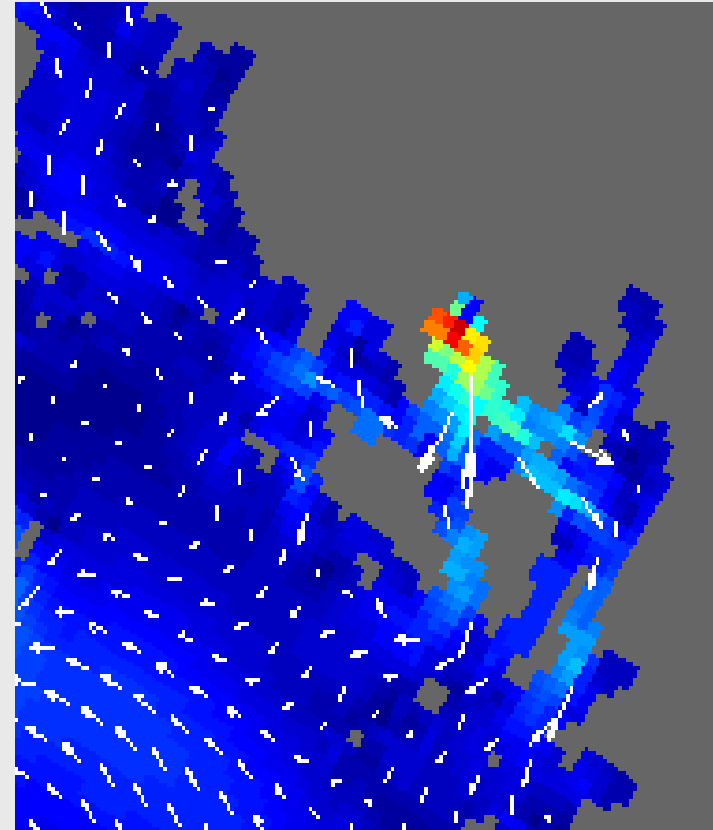
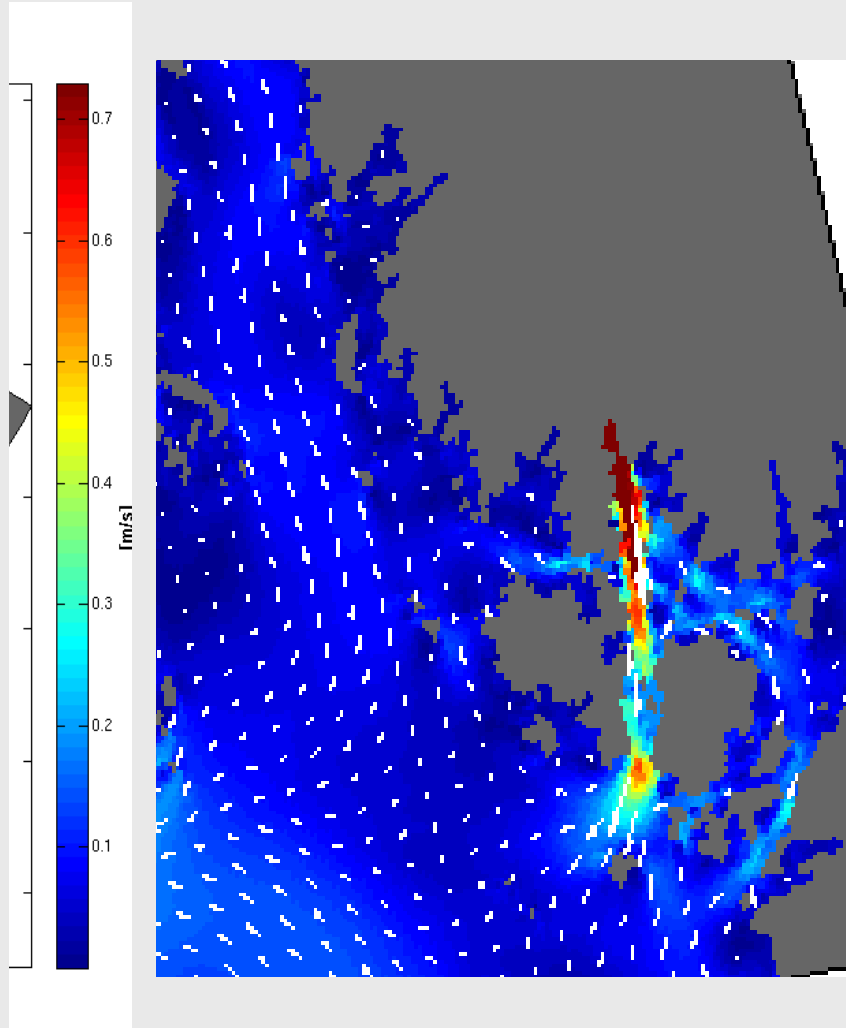
Surface yearly mean current in 300m setup



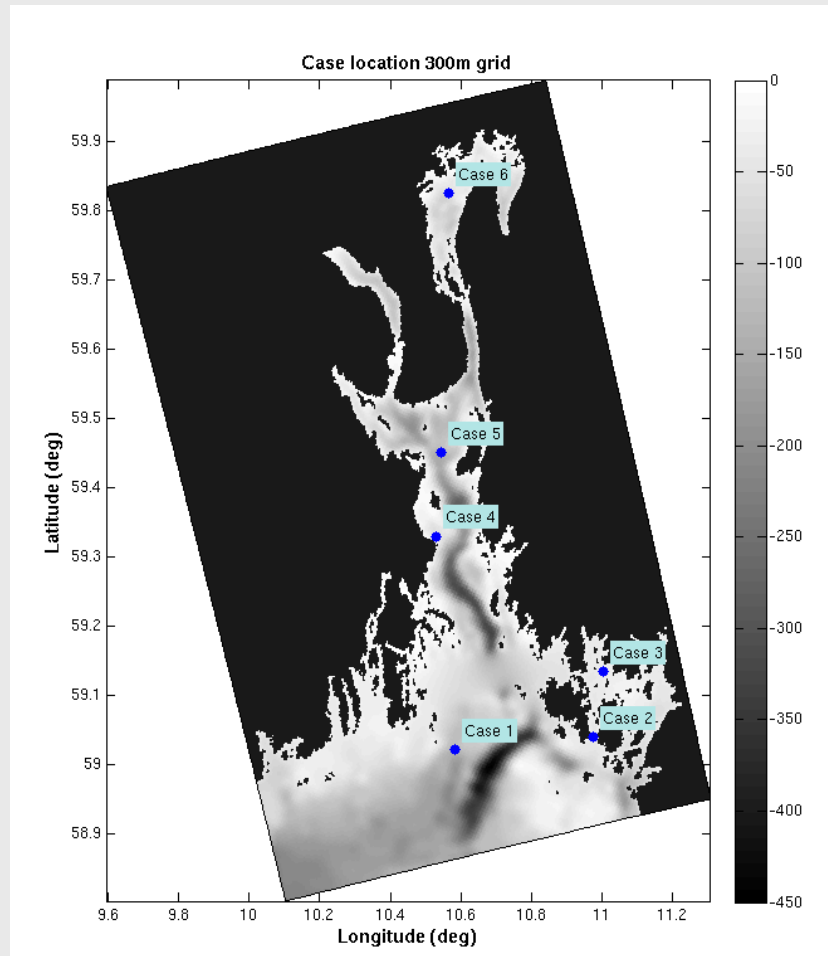
Surface yearly mean current in 800m setup



# Strøm nær overflaten



# Utslippspunkt for partikler

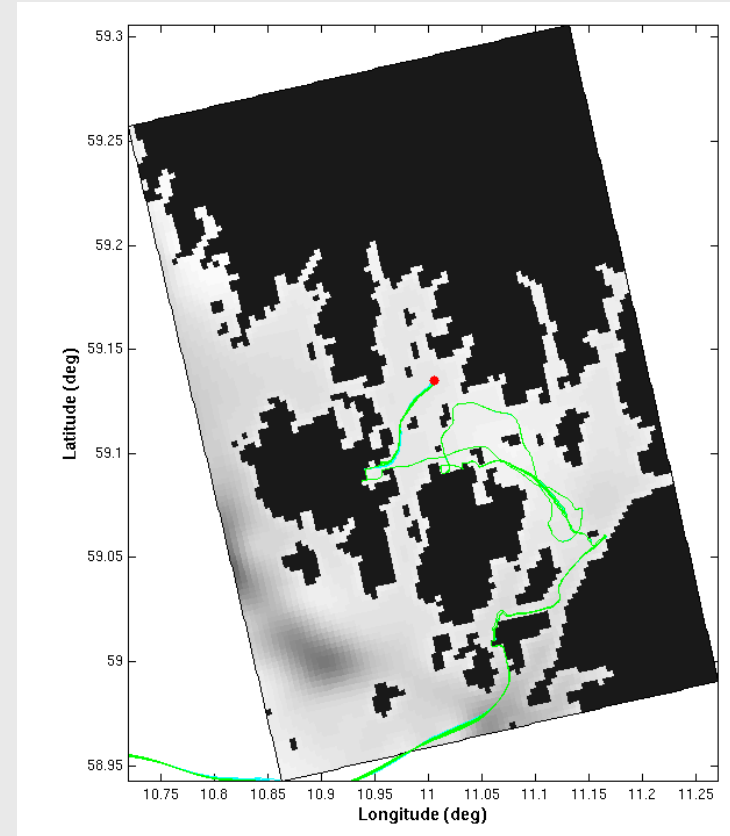
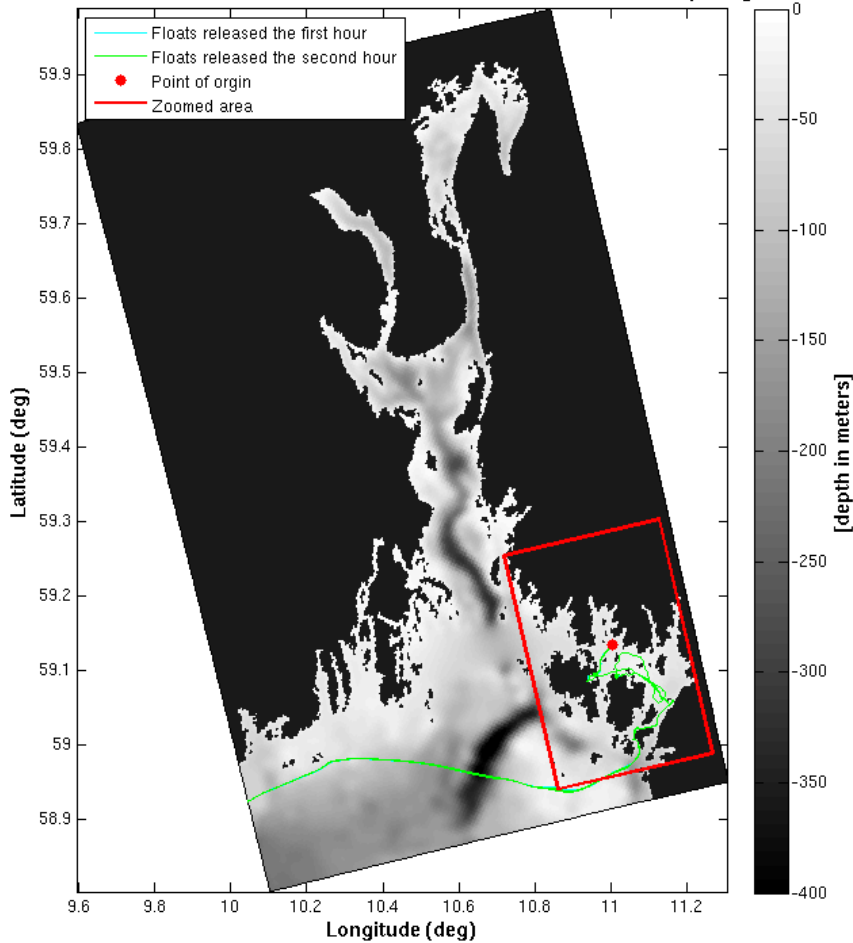




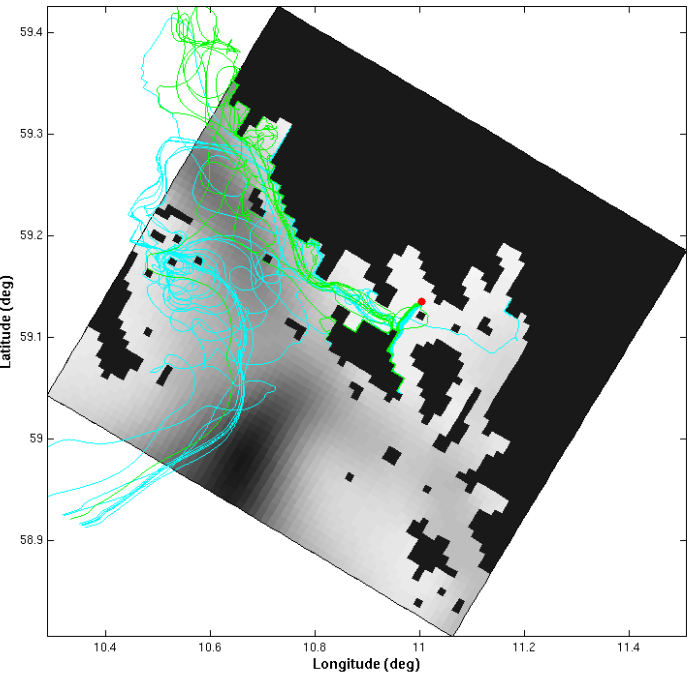
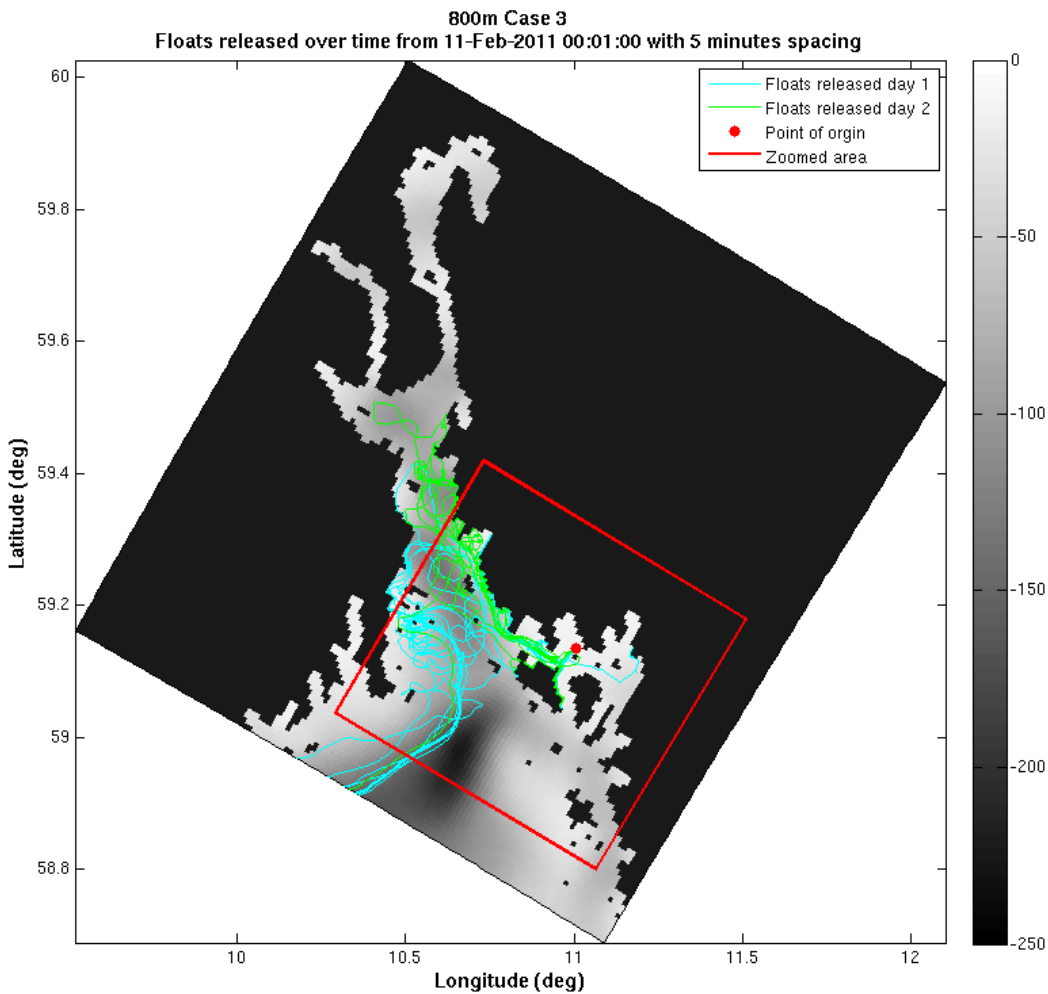
# Eksempel Hvaler 300 meter gitter

300m Case 3

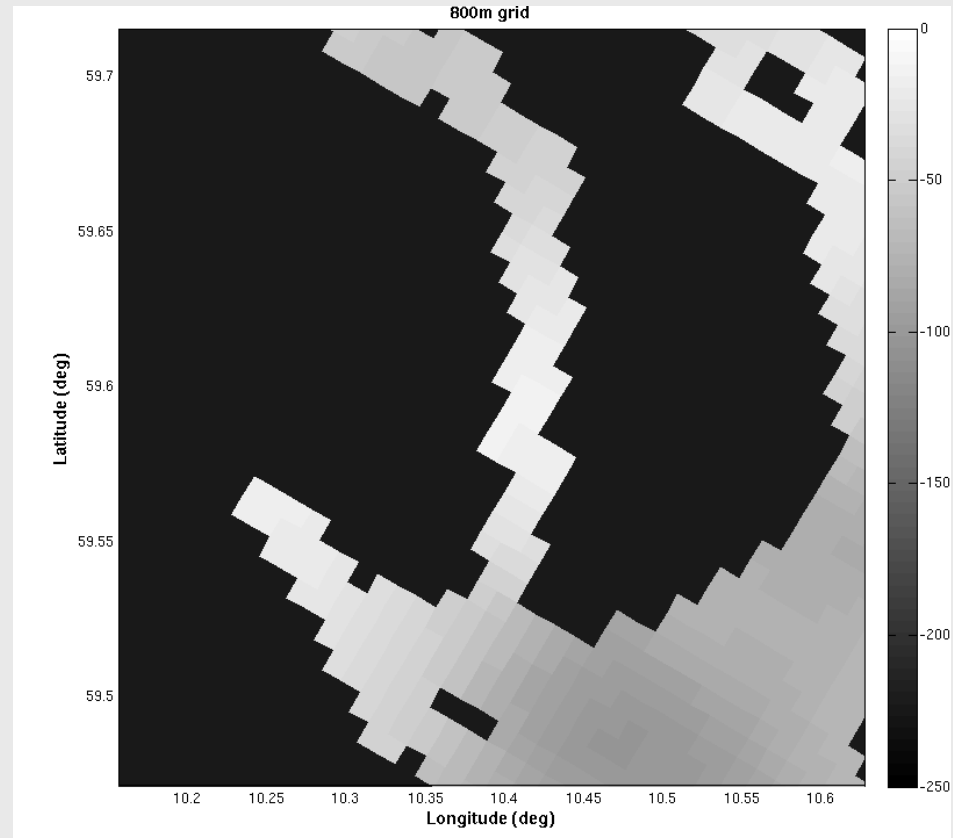
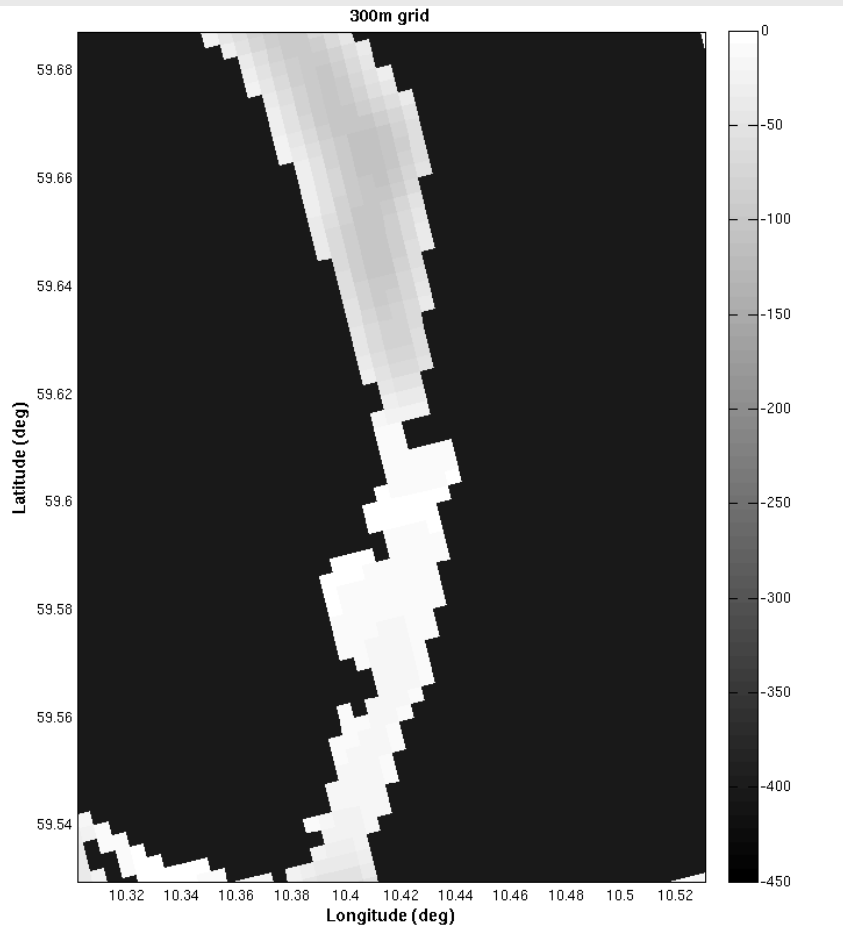
Floats released over time from 11-Feb-2011 00:01:00 with 5 minutes spacing



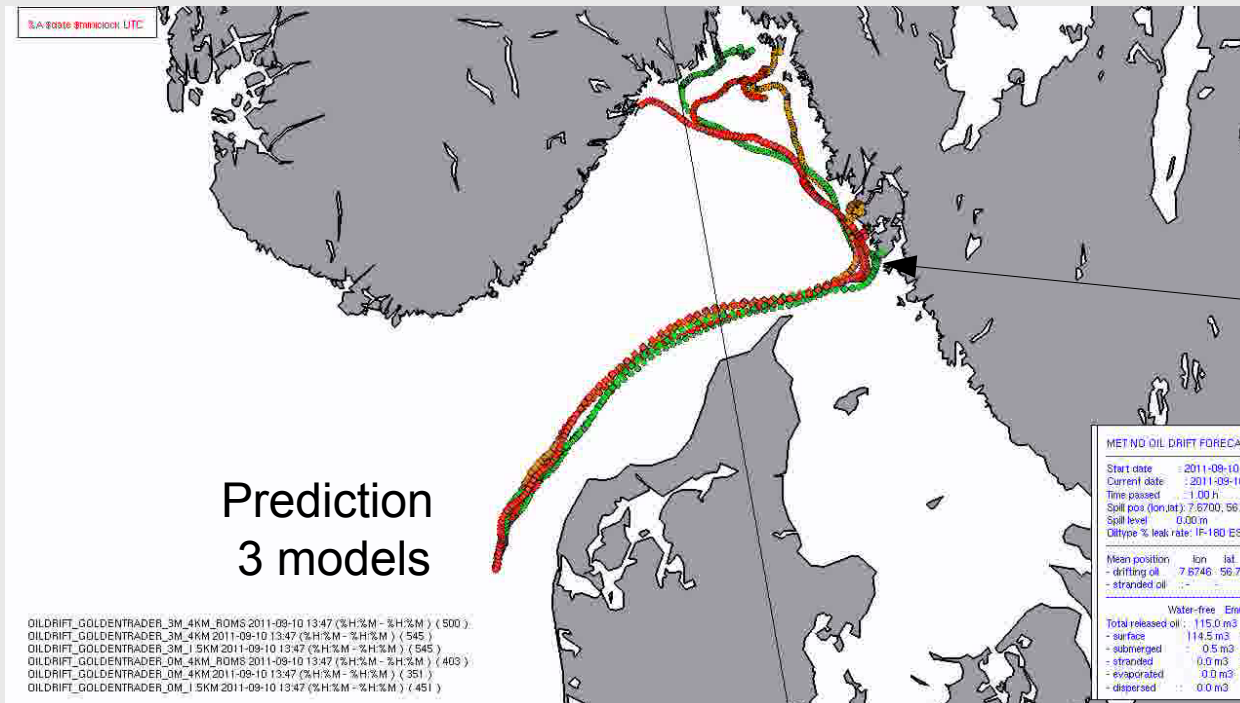
# Eksempel Hvaler 800 meter gitter



# Svelvik Verket



# Golden Trader uhellet (2011):



Tjörn

**Oil stranded** on Tjörn island Thursday 15 Sep  
at Noon (about 6-12 after predictions)



Meteorologisk  
institutt

Det var det